

PARADISE RESORT







OP-1



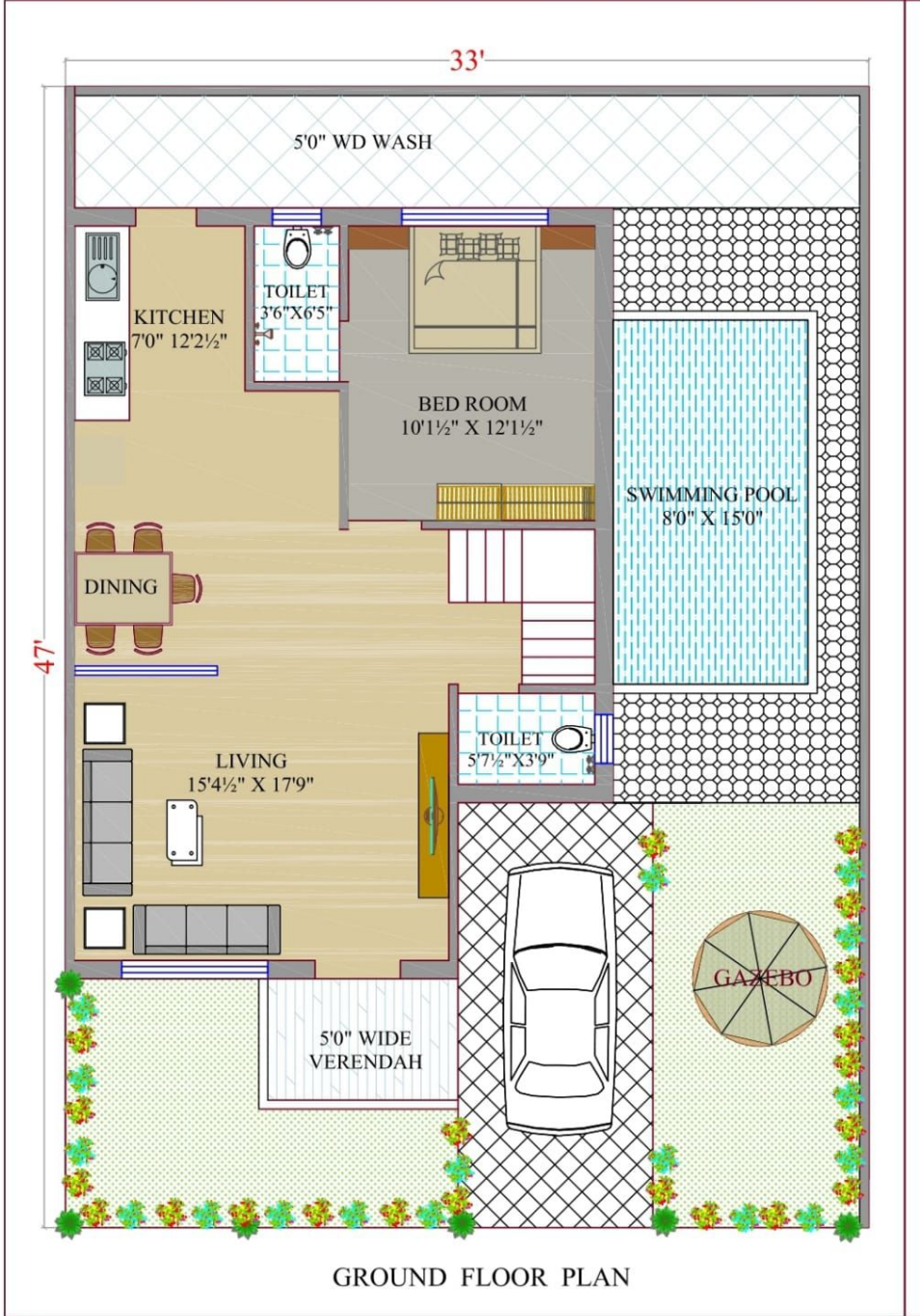
1ST TO 4TH FLOOR LAYOUT
PLAN

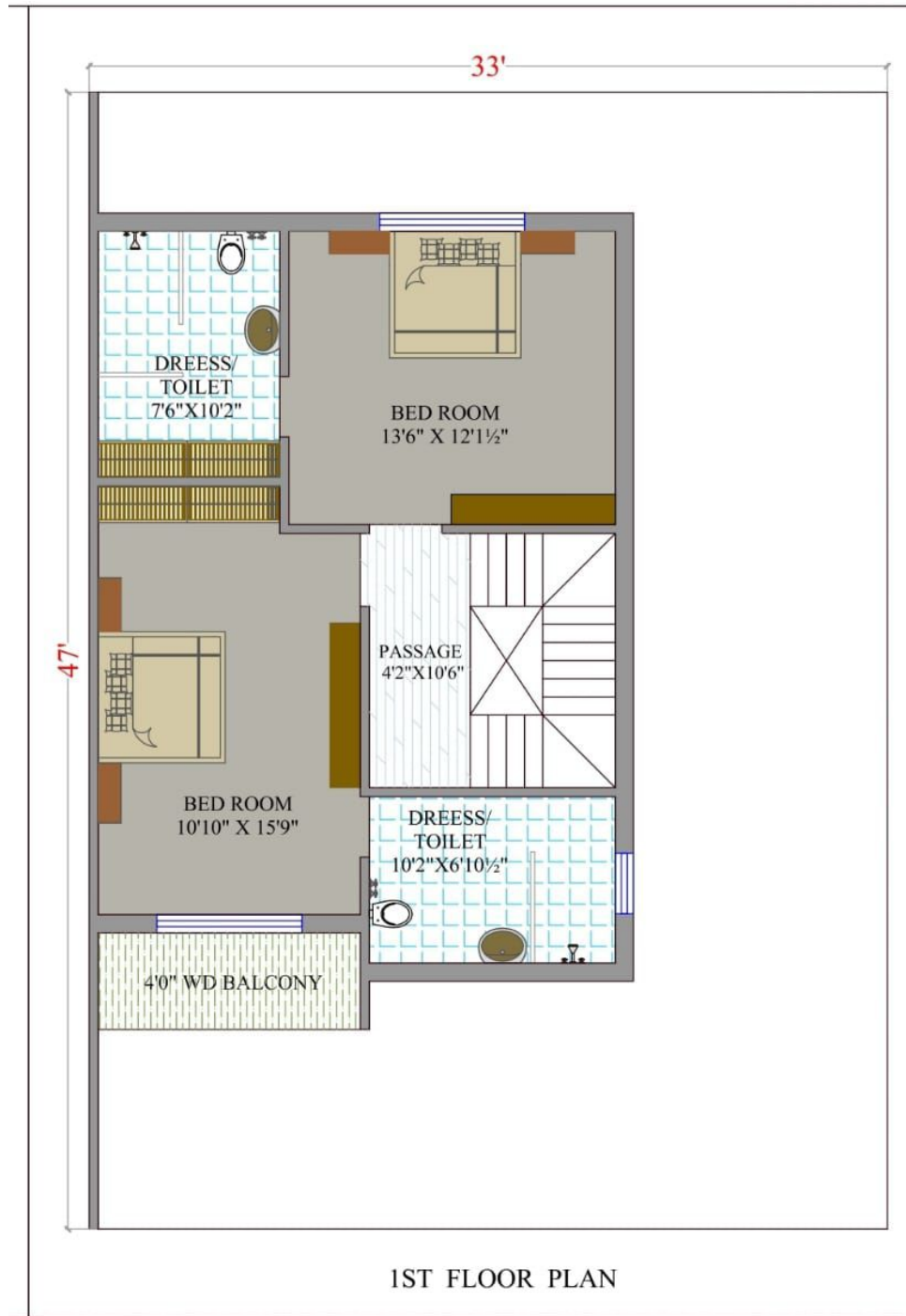










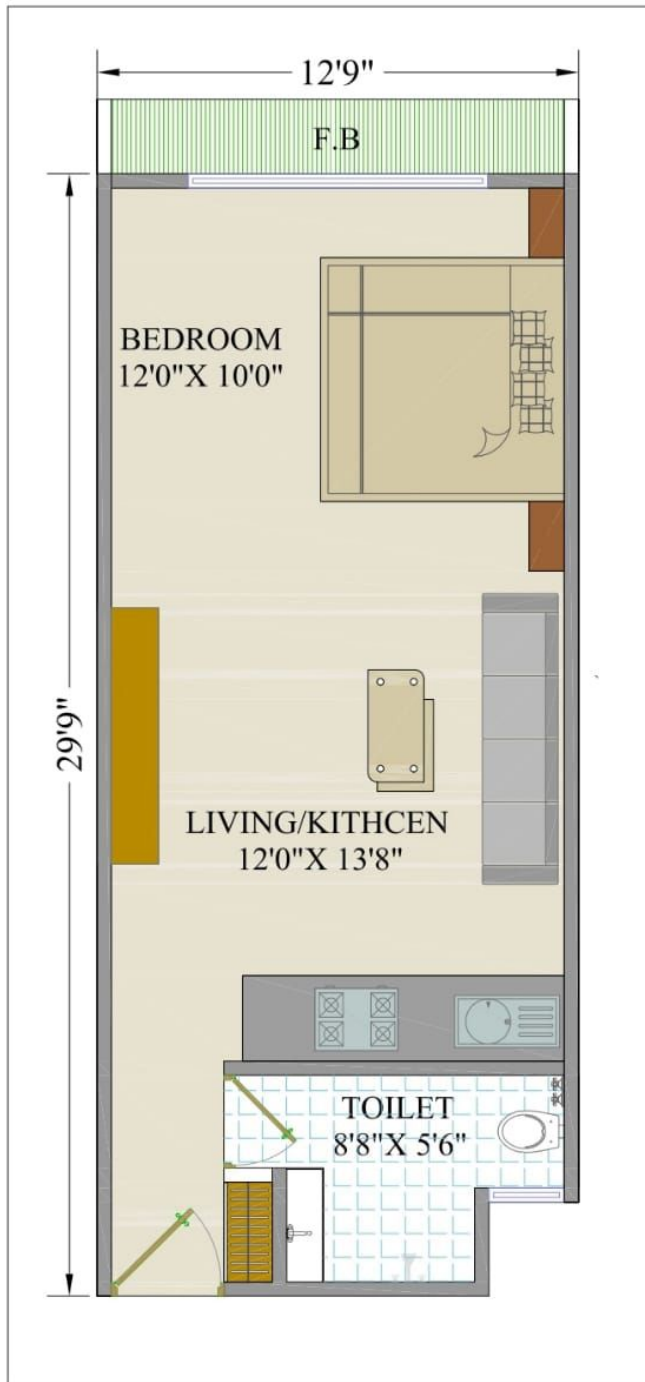


1ST FLOOR PLAN













































SPECIFICATION



RCC STRUCTURE

- Earthquake resistance RCC frame structure as per structural engineer's design



FLOORING

- Granamite tiles in lounge, dining & kitchen and in all bedrooms.



ELECTRIFICATION

- Concealed wiring of approved quality. Branded premium quality modular switches with sufficient electrical point as per architect's plan.



BATHROOM & TOILETS

- Full height premium glazed tiles.
- Premium branded plumbing fitting and fixtures.
- Anti - skid vitrified tiles of reputed make in bathroom and balconies



PAINT & FINISH

- Interiors : Smooth plaster with wall putty & Primer.
- Exterior : Double coat plaster.



KITCHEN

- Granite counter with stainless steel sink and tiling up to lintel level on walls.



DOOR & WINDOWS

- Doors : Elegant wooden entrance door internal flush doors.
- Windows : Colour anodized aluminium section windows with reflective glass of reputed make.



TERRACE

- Open terrace finished with chemical water proofing.

NOTE :

- Organizer reserves all rights to change or alteration without prior notice.
- All the elements objects treatments materials equipments & colour scheme shown are artisan's impression and purely for presentation purpose. By no means, it will form a part of the amenities, features or specifications of our final products or a part of legal agreement.

LOCATION MAP



DEVELOPERS



50, 4th Floor, B Wing, Aagam Arcade, Opp.
Siddhi Vinayak Temple, Vesu Main Road,
Surat (Gujarat).

+91 98980 76131

kamlanibuilder@gmail.com

www.kamlanibuilders.com

ARCHITECT & STRUCTURAL

Sanjay Panjwani

B.E. (Civil)

M.E. (Structure)

SITE ADDRESS

PALMERIA WHITE HOUSE
Palsana - Bardoli Road, Near Hindolia, Surat (Gujarat).